



BANGLADESH CRISIS | LOCAL NEWS

VOLUME 1 | 2018

**ADRA &  
YOU**

# WORDS FROM THE C.E.O.

Dear friend,

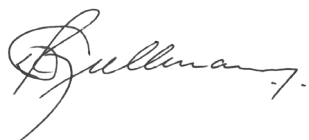
In the past 12 months alone, you have provided families with emergency food, shelter, hygiene and livelihood kits in places like Somalia, Vanuatu, Syria, Fiji, Tonga, Samoa and Bangladesh. I am grateful for your generosity and service to humanity and let me express a big Thank You. Because of you thousands of people have experienced hope and dignity.

Unfortunately disasters are striking more and more often. In a given year, ADRA as the global humanitarian agency of the Seventh-day Adventist Church responds to over 100 disasters. Although ADRA is very committed to long-term sustainable development, emergency management has become very important as more and more people are affected by disasters.

Tragically, 65 million people around the world have been forced from their homes – that is about twice the population of the South Pacific! In the past 6 months, more than 750,000 Rohingya have fled Myanmar following brutal ethnic violence. The recent events are rooted in decades of conflict that have manifested themselves through rape, massacres, and village burnings. Eyewitnesses have told stories that are too horrifying to recount. One of our own programme managers, Virginia Pycroft, just came back from Leda Rohingya Refugee Camp. She witnessed the conditions: “People seem to be lost and hopeless. Families sleep on the dirt floor of a tent that gets hot and sticky during the day and cold at night. There is no privacy. Food is scarce and hygiene and sanitation facilities terrible”.

Virginia then reflected “this trip was a good reminder for me; for why I do what I do, for the freedom and privileges that I have, and for the amazing work that ADRA does in providing and caring for people in crisis”. Each of the Rohingya is a child of God, and each one of them deserves to know that God cares. Deuteronomy 10:19 calls us to love and care for people like the Rohingya. It says: “Love those who are foreigners, because you yourselves were foreigners in Egypt” (NIV). We are all foreigners in this world. We belong to a heavenly place where there is only peace, love and hope.

While we wait for this eternal home, let us care for our brothers and sisters wherever they are. Enjoy the first edition of ADRA & YOU and thank you in advance for your support to ADRA's Ministry of Compassion!



Denison Grellmann, Chief Executive Officer  
ADRA New Zealand



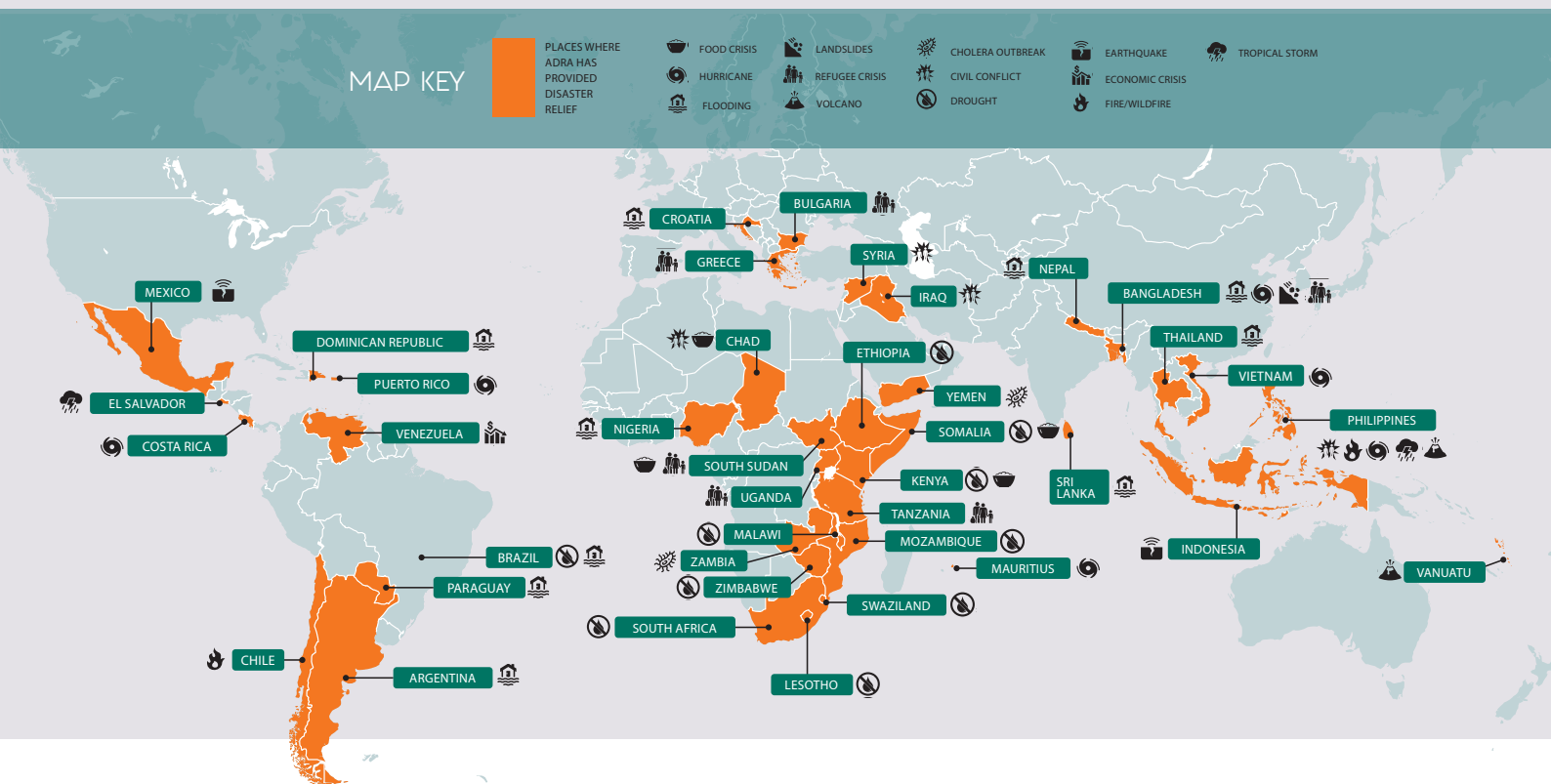


# ADRA IN ACTION

When they need you, you are already there!

Because of you, ADRA responds to over 100 disasters in a single year. The map below will give you an idea of where we have been and what emergencies we have responded to in the past 12 months.

You will also get a glimpse of the Bangladesh refugee crisis.



## ROHINGYA REFUGEES

One of the biggest ongoing crisis in the world at the moment is that of the Rohingya refugees. There are more than 15 camps in Bangladesh providing immediate safety for over 755,000 people.

Meet some of the refugees who live in the camps. Despite the poor conditions they live in, these refugees rally together and hope for a better future. The Rohingya keep their rich traditions alive and cling tightly to the family they still have left.



It is not uncommon to find a **YOUNG CHILD**, or packs of young children, **WANDERING ALONE** in the vast sprawl of the refugee camps in Bangladesh. UNICEF estimates that **60 PERCENT OF ALL ROHINGYA REFUGEES ARE CHILDREN**.



Anwara and her children now live at Camp Leda in the southeast corner of Bangladesh, just a few miles from her dead husband and her old life. **"I LEFT EVERYTHING BEHIND TO FIND SAFETY** in Bangladesh," she said. "Now everything is gone, but my children are well."

## ADRA IS SUPPORTING THE ROHINGYA REFUGEES BY...

Providing the following kits, containing vital supplies. These kits assist in key areas of need and range from Emergency Food Packs to Shelter Kits, which contain the necessary equipment to sustain life in a new environment. We have indicated the cost on each package below, in case you wish to donate specifically to this cause. Visit [www.adra.org.nz](http://www.adra.org.nz) for more details.

**\$72**

### Emergency Food Pack

Providing:

Lentils,  
Rice,  
Sugar,  
Salt,  
Oil.

**\$75**

### Shelter Kits

Providing:

Sleeping Mats,  
Tarpaulin,  
Solar Lantern.

**\$215**

### Hygiene Kits

Providing supplies for  
2 families:

Supplies to protect them  
from illness and disease.  
Includes Safety Pins,  
Water Jugs, Soap, Buckets,  
Reusable Nappies, Nail  
Clippers.

**\$785**

### Dignity Kits

Providing supplies for  
11 families:

Supplies for women  
fleeing family violence,  
including Sarongs,  
clothing, sanitary items.



Living out of a tent doesn't change the fact that refugees must accomplish daily tasks. Activities to stay clean, such as **LAUNDERING CLOTHES** and bathing, are much harder in a refugee camp, but still necessary. The Rohingya wash their clothes **IN WHATEVER WATER** sources are **AVAILABLE**, and they bathe themselves there too, wrapped in cloth and plastic for modesty.

Meet Abdu Rahaman. The former shopkeeper and farmer was **FORCED TO FLEE** Myanmar when the army attacked his village. Amid the burning, raping, and murdering, Abdu gathered his wife and four children and ran toward the river separating Myanmar from Bangladesh. "We were almost killed many times," Abdu said. "**WE ARE SO LUCKY TO BE ALIVE.**" Every one of the refugees behind him has a similar story of violence, fear, and hard-won survival.



Girls, women, and men alike **WAIT IN LINE AT THE FOOD DISTRIBUTION** in Camp Leda, one of several camps in Bangladesh for Rohingya refugees fleeing violence in Myanmar. The weekly distribution, hosted by ADRA, provides families with enough oil, salt, sugar, lentils, and rice to continue to survive, and hope for a better tomorrow.



# OUT + ABOUT

## NEWS FROM OUR COMMUNITIES

### PATHWAYS

Pathways was developed to help youth gain their drivers licence. Having a licence is central to so many other facets of life, not only for the individual, but also their family. 70% of all jobs now require a drivers licence, so if you don't have one your opportunities are automatically limited! This is helping people thrive.

ADRA together with its partners offer this programme to educate and train youth on how to be safe and responsible drivers, creating stronger and safer communities. Since its launch late last year 160 New Zealanders have gone through the programme and half of them have already got their licence.

We look forward to helping more young people gain access to a brighter future through the Pathways Programme.

### ADRA CHARITY RUN

The ADRA Charity Run is the biggest event on ADRA's annual calendar. Each year we look forward to having an event where we get to see first-hand the commitment people have made to make a positive difference in the world. We would like to say a special thank you to everyone who came along and supported the event. Whether you donated, took part or volunteered you helped to contribute to an awesome event which raised

over \$60,000! This funding will help support amazing projects both overseas and right here in New Zealand.

### BIG CAMP

This year we had the privilege of sharing a virtual reality (VR) experience with people attending the North and South New Zealand Big Camps. The virtual reality experience takes you through the journey of a woman whose life is drastically changed.

So what exactly happens in the virtual reality experience? You will have to see it for yourself! If you are interested in having your church, school or group experience, please contact the ADRA team at [adra.info@adra.org.nz](mailto:adra.info@adra.org.nz).

We also enjoyed a special breakfast and trivia with our supporters to say a big thank you for their support and prayers, but also to challenge their knowledge of ADRA's engagement in New Zealand and overseas.

At both camps we teamed up with Adventist Health to do the Live More Fun Run and raise funds for projects in Rotorua and Christchurch. Thanks to everyone who got involved. Check out photos from both Big Camps on the ADRA New Zealand Facebook page.



# COMING UP

## CYCLE ADVENTURE

Are you ready for an amazing adventure? Start planning to join the Auckland to Coromandel Bike Ride in March 2019. If you are looking for a trip of a life time and for a good excuse to get healthy again, this challenge is for you. More information available soon.

## ADRA CHARITY RUN

The ADRA Charity Run will be coming around before we know it. This year in November, hundreds of people will again run so that others may thrive. Start telling your friends and planning for it! Mission Bay, Auckland. More information coming soon.

## LEAVE A LASTING LEGACY

Leave behind a legacy that will help others thrive. For more information about how you can leave a lasting impact through making a will or bequest visit, [www.adra.org.nz/legacy](http://www.adra.org.nz/legacy) or call 0800 499 911

## CONNECTIONS

Don't just see the world – help change it, by experiencing an ADRA Connections Trip

ADRA Connections provides an exciting opportunity to experience ADRA projects first-hand. We have projects all over the world that are making a lasting impact in people's lives, be part of the journey!

## COMMUNITY TRANSFORMATION PARTNERSHIP

Hundreds of families have benefited from the 'My Family' and 'Innovations' opportunities under the Community Transformation Partnership (CTP) portfolio.

If you are looking for a way for your church to be more mission driven and of service to communities, there is no better way than to engage in a CTP initiative.

Visit [www.adra.org.nz/ctp](http://www.adra.org.nz/ctp) for more information. The next round of funding is 15 May 2018.

## REGULAR GIVING

Regular giving is an important part of providing sustainable funding to a wide range of projects that support families. We rely on donor generosity to plan for the future and to ensure that lives will continue to be impacted by ADRA New Zealand's work.

By signing up as a regular donor you will help ensure ADRA can continue to help where it is needed most. To find out which donation method would suit you best, please call the friendly ADRA team today on **0800 499 911**. Thank You for your generosity.